

# REMALOX HD 35

Our high-quality **REMALOX HD 35** segment plates provide optimum impact and wear protection. You avoid unnecessary cost for maintenance and downtime, thereby increasing the productivity of your machinery and equipment many times over.

Due to its composite construction **REMALOX HD 35** is especially suitable for applications, where in addition to abrasion, impact energy plays a major role. While the rubber matrix absorbs impact energy, vulcanized  $\text{Al}_2\text{O}_3$ -ceramic cylinders protect the surface against abrasive wear. The additional metal layer on the undersurface enables easy fitting on the application areas. **REMALOX HD 35** segment plates have proven optimal performance in applications with high delivery volumes of broken material, long maintenance intervals and constructional unfavourable impact angles.



## Typical field of use

- Material transfer stations
- Vibratory grinding machine
- Hopper lining
- Chute lining

## Advantages

- Protection against extreme wear and impact due to composite construction
- Long service life
- Easy and fast installation
- Technical consultation and service on-site by trained REMA TIP TOP personnel





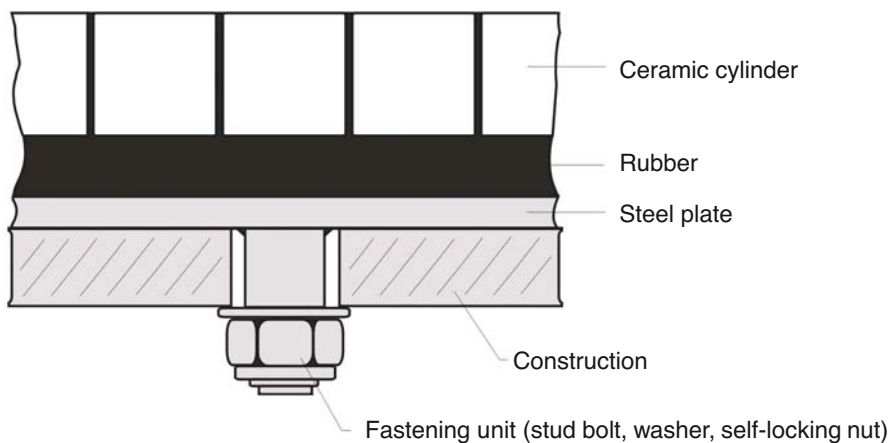
Industrie

# REMALOX HD 35

## Technical properties

Reference Number	539 8980	539 8970
Dimensions (L X W X H)	500 x 500 x 35 mm	500 x 250 x 35 mm
Weight	26,0 kg	13,0 kg
Composition	5 mm steel sheet, 10 mm rubber, 20 mm ceramic cylinders with Ø 20 mm	

## Fastening recommendation



REMA TIP TOP GmbH  
Business Unit Industrie

Gruber Strasse 63  
Phone:  
Fax:  
[www.rema-tiptop.com](http://www.rema-tiptop.com)

85586 Poing/Germany  
+49 8121 707-245  
+49 8121 707-222  
[info@tiptop.de](mailto:info@tiptop.de)