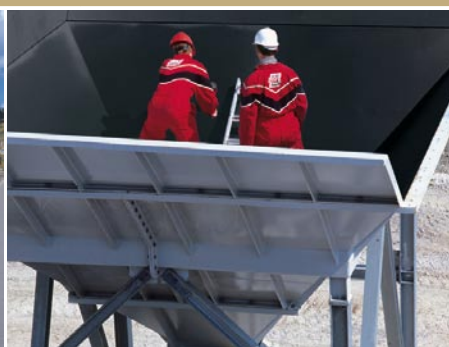


REMA TIP TOP BONDING SYSTEMS



Industrie





ONE BRAND – ONE SOURCE – ONE SYSTEM

REMA TIP TOP INDUSTRIE



Rely on REMA TIP TOP – The Premium Brand

Whether you are splicing conveyor belts, repairing belts or bonding rubber lining materials, you can always rely on **REMA TIP TOP**. The recognized leader in versatile, high quality cold vulcanizing cements **REMA TIP TOP** has led the way with long-lasting and environmentally-sound adhesives, products that deliver the best adhesion strength in the industry.

REMA TIP TOP also manufactures the industry's most comprehensive range of rubber lining materials, pulley lagging, skirting rubber, cleats, scraper rubber, belt cleaning systems and conveyor belt splicing and repair products. See your **REMA TIP TOP** representative for details.

For more information click
[www.rema-tiptop.com/portal/
worldwide-distribution.html](http://www.rema-tiptop.com/portal/worldwide-distribution.html)

The right product for each application

OUR QUALITY



Field of application	Series	Adhesive / Hardener	Metal Primer
Wear Protection, Conveyor Belt Splicing and Repair, Pulley Lagging	SC-Series	SC 2000 UT-R 20 (nonflammable)	PR 200 (PR 300)
		SC 4000 E-40 (CFC-free)	PR 200 (PR 304)
Corrosion Protection	BC-Series	BC 3000 UT-R 20 (nonflammable)	PR 300 (PR 200)
		BC 3004 E-40 (CFC-free)	PR 304 (PR 200)
Splicing and Repair of PVC Conveyor Belts, Bonding of PVC and PU materials	PC-Series	Plastic Cement UT-R 20 (nonflammable)	–
		Plastic Cement PC-4 E-40 (CFC-free)	–

Our quality control system guarantees competitive benefits thanks to groundbreaking product developments and carefully controlled raw materials exclusively from certified suppliers in order to meet stringent requirements at every stage of production.

REMA TIP TOP was one of the first companies in the sector to be awarded DIN ISO certification in the world. Our DIN EN ISO 9001: 2000 accreditation is evidence of our consistently high quality standards.

Future-proof performance

Constant expansion of our global network of expertise, high levels of investment into research and development and tapping into new sectors of the conveying and processing market are just some of the means by which we are constantly

improving our position on the international markets. These are the optimum conditions which enable us to meet the needs and requirements of our customers at the highest level, both now and in the future.

Worldwide REMA TIP TOP expertise and quality sets the standard.

- High quality and reliability of our Bonding Systems
- State-of-the-art wear and corrosion protection rubber lining systems
- Reliable conveyor belt splicing and repair materials
- Safe and easy-to-use products
- Bonding Systems for a broad range of applications
- Bonds that last

Rely on REMA TIP TOP.

REMABOND

CEMENT SC SERIES

Fields of application:

The Bonding Systems of the **CEMENT SC Series** are applicable for durable rubber-rubber, rubber-fabric, rubber-metal and fabric-fabric bonds in the fields of wear and corrosion protection as well as in conveyor belt technology.



In general, the **SC Series** provides **excellent initial and final bonding strength**. Optimum adhesion will be achieved when bonding **REMA TIP TOP products with CN bonding layer**. The adhesives have a user-friendly long open time and are easy-to-process even at low temperatures. The especially developed bonding system of the SC Series convinces with its **superior dynamic load capacity**. To achieve optimum results we recommend the use of appropriate **REMA TIP TOP** primers and cleaning fluids. The bonding systems are supplied with detailed application instructions enclosed.



CEMENT SC 4000

- Free of CFC and aromatics
- Excellent contact adhesion
- Available in three colors (green, black and white)
- Long shelf life (2 years if stored according to DIN 7716)
- Processed with Hardener E 40

CEMENT SC 2000

- Nonflammable
- Excellent contact adhesion
- Available in three colors (green, black and white)
- Long shelf life (4 years if stored according to DIN 7716)
- Processed with Hardener UT-R 20
- Underground approval



REMABOND

CEMENT BC SERIES



Fields of application:

The Bonding Systems of the **CEMENT BC Series** are applicable for large-area, rubber-metal and rubber-concrete bonds in the fields of wear and corrosion protection, e.g. tank lining, lagging of large pulleys as well as on-site applications.

The **BC Series** offers a **long open time**. The BC Series combines **superior final adhesion strength** with a long time span before joining (open time), which enables you to bond large surface areas without the risk of over drying. Optimum adhesion is achieved when bonding the **REMA TIP TOP** products with **CN-Bonding layer**. The low viscosity ensures a quick and economic processing of the bonding systems.



CEMENT BC 3004

- Free of CFC and aromatics
- Long contact life (open time)
- Color: blue
- Long shelf life
(2 years if stored according to DIN 7716)
- Processed with Hardener E 40

CEMENT BC 3000

- Nonflammable
- Long contact life (open time)
- Color: blue
- Long shelf life
(4 years if stored according to DIN 7716)
- Processed with Hardener UT-R 20

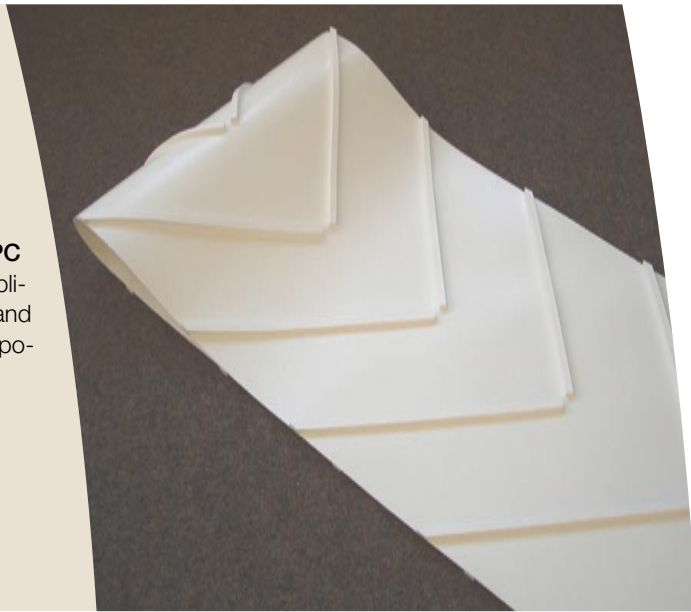


REMABOND

CEMENT PC SERIES

Fields of application:

The Bonding Systems of the **PLASTIC CEMENT PC Series** are especially developed for the durable splicing of PVC conveyor belts as well as for the repair and bonding of foils and sheets made of soft PVC and polyurethane.



The **REMA TIP TOP PC Series** offers superior adhesion for bondings and splices exposed to high dynamic load. The two-component bonding system provides a user-friendly open time with high initial and final adhesion strength. It was especially developed for the bonding of PVC and polyurethane materials.



CEMENT PC 4

- Free of CFC and aromatics
- Good initial and final adhesion strength
- Color: transparent
- Long shelf life
(2 years if stored according to DIN 7716)
- Processed with Hardener E 40

CEMENT PC

- Nonflammable
- Good initial and final adhesion strength
- Color: transparent
- Long shelf life
(4 years if stored according to DIN 7716)
- Processed with Hardener UT-R 20
- Underground approval



REMA TIP TOP Metal Primers: The bonding agent for rubber-metal bondings with high requirements regarding static and dynamic loadability

These one-component, quick drying metal primers can be used on a wide range of metal surfaces. They provide a high initial adhesion strength and help assure a complete and long-lasting bond between rubber and metal.

Metal Primer PR 200

- CFC-free
- Excellent adhesion in combination with SC 2000, BC 3000 or SC 4000
- Short drying time

Metal Primer PR 300

- Good resistance against atmospherical influences such as humidity
- Temporary corrosion protection for metal surfaces after pre-treatment and prior to rubber lining
- Excellent adhesion in combination with SC 2000 or BC 3000
- Nonflammable

Metal Primer PR 304

- Free of CFC and aromatics
- Excellent adhesion in combination with BC 3004 or SC 4000
- Good resistance against atmospherical influences such as humidity
- Temporary corrosion protection for metal surfaces after pre-treatment and prior to rubber lining



REMA TIP TOP NR Primer: The bonding agent for rubber-rubber bondings

The REMA TIP TOP NR Primer was especially developed for the bonding of natural rubber products.

NR Primer

- Increases the adhesion strength when bonding natural rubber materials
- For the use in combination with the bonding systems of the SC/BC Series

CLEANING FLUIDS

The REMA TIP TOP cleaning fluids are designed to remove grease, oil and other contamination from rubber and to wash down metal surfaces after sandblasting or grinding, providing a clean, contaminant-free bonding surface which is indispensable for a strong bond.

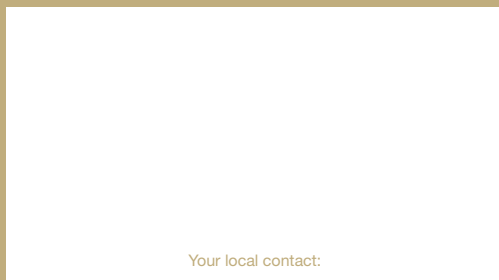
TIP TOP Cleaning Fluid

- Cleaning/degreasing of substrate surfaces prior to bonding
- Cleaning/degreasing of brushes and equipment
- Approved for use in underground applications (e.g. mining industry)
- Nonflammable

TIP TOP Cleaning Fluid R4

- Free of CFC and aromatics
- Cleaning/degreasing of substrate surfaces prior to bonding
- Cleaning/degreasing of brushes and equipment
- Also available as spray (economical application)





Your local contact:

582 0231 - V.09 Printed in Germany

REMA TIP TOP GmbH
Business Unit Industrie

Gruber Strasse 63
Phone:
Fax:
www.rema-tiptop.com

85586 Poing/Germany
+49 8121 707-245
+49 8121 707-222
info@tiptop.de

